

Versatile adhesive cementation

Variolink®
Esthetic

Versatile solution for all
types of restorations
and materials



Convincing versatility

Variolink® Esthetic is a versatile and esthetic light- and dual-cure luting composite for the permanent seating of all types of restorations and materials.

94.5%

survival rate of IPS e.max CAD restorations cemented with Variolink Esthetic DC after 7 years in situ [2]

96%
satisfaction with
Variolink Esthetic [1]

Light-cure variant

For the adhesive cementation of restorations measuring < 2 mm in thickness and showing adequate translucency, such as

- veneers,
- inlays, onlays and partial crowns

made of lithium disilicate, glass-ceramic or composite resin materials

Dual-cure variant

For the adhesive cementation of

- veneers,
- inlays, onlays and partial crowns,
- crowns,
- bridges,
- and endodontic posts*

made of lithium disilicate, glass-ceramic, composite resin material, zirconium oxide or metal

Recommended adhesive: Adhese® 2, Adhese® Universal or Adhese® Universal DC



- ✓ Maximum flexibility in adhesive cementation
- ✓ Lasting impressive esthetic results [2,3]
- ✓ Well-balanced and compact Effect shade range
- ✓ Proven and reliable shade stability [2]
- ✓ User-friendly handling and controlled removal of excess [3]

[1] Ivoclar Vivadent AG, customer survey (approx. 700 participants) in Europe/USA, September 2016.
[2] Sorensen JA et al, IADR Abstract #1214, 2025.
[3] Edelhoff, D, Prospective clinical application observation, Study Report, University of Munich, 2019.
[4] Gianasmidis A, DZW 2016 (38), p. 14-15, additional data on file.
[5] Gianasmidis A, DZW 2016 (39), p. 18-19, additional data on file.

* Only with Adhese Universal DC or Adhese 2 with the blue DC cannula

Inspiring esthetics

The cementation of esthetic restorations is a demanding task. Variolink Esthetic comprises a well-balanced and compact selection of Effect shades, which allow you to place your restorations seamlessly within the natural dentition, thereby further customizing the result.

The unique Effect shade range allows dental professionals to match the shade effect of the restoration to that of the adjacent teeth.

The "Neutral" shade demonstrates a high translucency level and therefore enables colour-neutral luting of the restoration. The shades "Light" and "Light+" produce a gradual lightening effect, while the shades "Warm" and "Warm+" gradually darken the overlying ceramic or composite restoration.

The "White opaque" shade is a new addition to the Effect shade concept. Thanks to its high opacity, it is suitable for efficiently masking discoloured tooth structure.

Proven shade stability for long-lasting esthetic results

Due to its patented Ivocerin® light initiator the colour of the esthetic luting composite does not visibly change, even when it is exposed to intensive light or moisture.^[4]

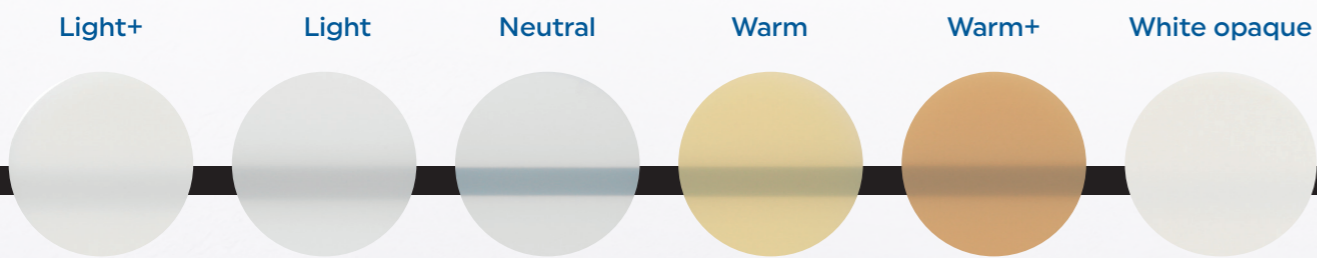
Variolink Esthetic is also highly resistant to wear, thus ensuring good margin quality while the restoration is in service.



Anterior crown made of IPS e.max Press LT on tooth 11, Ivoclar, Liechtenstein



Onlay made of IPS e.max CAD on tooth 36, Ivoclar, Liechtenstein



Useful tip

Our Variolink Esthetic Try-In pastes allow you to try in your restorations and check the final esthetic outcome quickly and effortlessly.

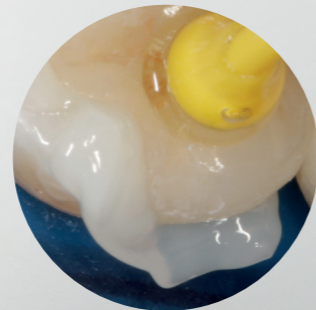


[4] Gianasmidis A, DZW 2016 (38), p. 14–15, additional data on file.

User-friendly processing

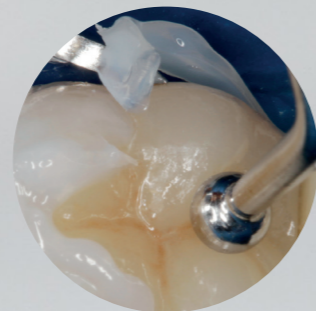
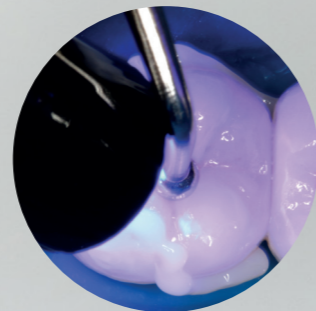
Flexible situational consistency ^[5]

The viscosity controller contained in Variolink Esthetic optimally combines good flow behaviour with stability. The adhesive luting composite is easy to dispense and apply from the syringe. Moreover, excess material smoothly flows from the cement gap, but remains visibly stable at the cementation joint so that it can be readily removed.



Easy excess removal ^[5]

Variolink Esthetic sets a new benchmark in terms of easy excess clean-up. The smart combination of the reactive light initiator Ivocerin and a light sensitivity filter allows excess material to be tack-cured with light and then cleanly removed.^[5]



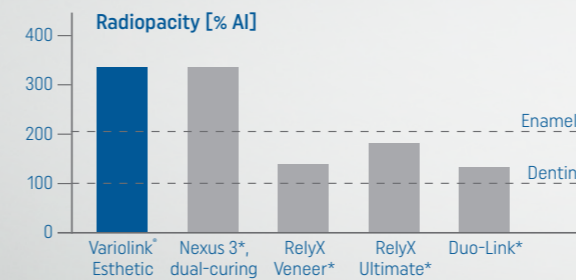
Ivoclar, Liechtenstein

Impressive radiopacity

The high radiopacity^[6-8] of Variolink Esthetic makes it easier to detect luting material excess and identify secondary caries.



Dr E. Mahn/Dr J.P. Sánchez, Chile



* These brands are not registered trademarks of Ivoclar Vivadent AG
Source: R&D Ivoclar Vivadent AG, Schaan, 2014 (measured according to ISO 4049).

NEW

Optimized viscosity for the cementation of veneers

In order to simplify the cementation of veneers, the viscosity of the light-curing variant Variolink Esthetic LC was further optimized in collaboration with our customers. The higher viscosity* provides even better tactile feedback when placing veneers in the anterior region and is also helpful when aligning the restoration.



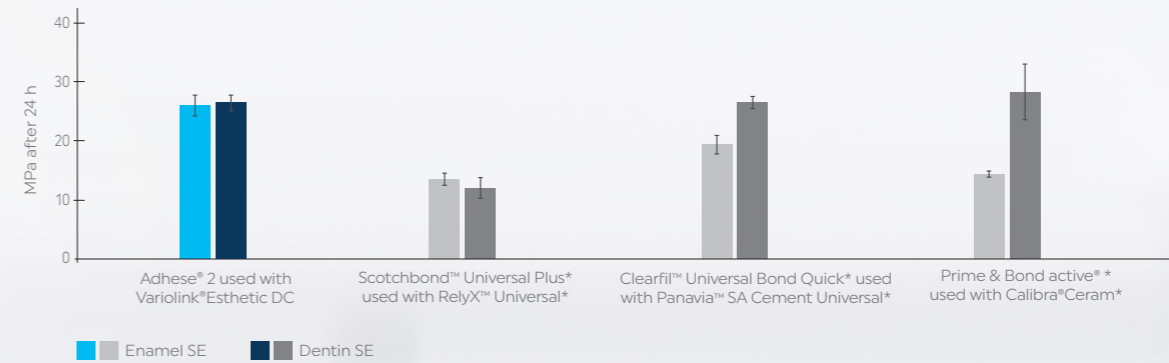
[5] Gianasmidis A, DZW 2016 (39), p. 18–19, additional data on file.
[6] Erzurumlu ZU et al., Clin Oral Investig 2021 Vol. 25 (10), pp. 5735–5741.
[7] Westphal M et al., IADR Abstract #0918, 2018, additional data on file.
[8] Gianasmidis A, DZW 2016 (38), p. 14–15, additional data on file.

* Availability may vary from country to country

All-round solution for adhesive cementation

Our adhesive cementation products are carefully coordinated and developed to work together in any clinical situation. Used with an adhesive and primer suited to the given type of restoration, Variolink Esthetic generates a strong bond between the restoration and the tooth structure. [9-15]

Shear bond strength values of indirect restorations to enamel and dentin using the self-etch technique (SE)



Source: R&D, Ivoclar Vivadent AG, Schaan, 2024.

* These brands are no registered trademarks of Ivoclar Vivadent AG.

A strong bond to the tooth structure

Adhese® 2 with the blue DC cannula

- ✓ Adhesive with dual-curing properties, which is particularly useful in situations where light access is limited.
- ✓ Improved accuracy of fit of indirect restorations following chemical curing, as potential pooling effects do not compromise fit.
- ✓ Its low layer thickness (approx. 10 µm) ensures precise fit even after light-curing and produces highly esthetic results.
- ✓ High bond strengths (> 25 MPa) to enamel and dentin [17]
- ✓ Compatible with all etching techniques.
- ✓ Integrated desensitizing effect

For light-curing-only applications with Variolink Esthetic LC, use Adhese 2 with the black LC cannula.

Reliable bond to restoration surfaces

Monobond® Plus universal primer

- ✓ Conditioning of all common restorative materials
- ✓ Reliable bond to restorations made of zirconium oxide and glass-ceramic [18]
- ✓ Suitable for noble and base metal alloys

Monobond® Etch & Prime glass-ceramic primer

- ✓ World's first and only self-etching glass-ceramic primer
- ✓ Long-lasting, durable bond [19,20]
- ✓ Etching and silanization of glass-ceramic surfaces in one easy step

NEW:
Integrated
co-initiator



[9] Aslan Y U et al, Eur J Prosthodont Restor Dent, 2019 (27), p. 131-140, additional data on file.
 [10] Lyann S K et al, J. Adhes. Dent., 2018 (20), p. 261-268.
 [11] The Dental Advisor, Variolink Esthetic DC, LC 18-months clinical performance, Vol. 35, No. 04, p. 10-11, 2018.
 [12] Guimaraes H A B et al, Int J Biomater, 2018, p. 1-7.
 [13] Maassen et al. J. Prosthet. Dent., 2021, p. 182-188, additional data on file.
 [14] Elsayed A et al. IADR Abstract #2657, 2017.
 [15] Salem S K et al. EDJ, 2019, 65, p. 1853-1864.
 [16] Dual-curing (light- and self-curing) is only possible in combination with the blue DC cannula and dual-curing core build-up or luting composites.
 [17] In combination with Variolink Esthetic DC, Tetric plus Fill and Tetric plus Flow.
 [18] Elsayed et al.; J. Adhes. Dent. 2017; 19: 221-228.
 [19] Maier E et al, J. Adhes. Dent. 2019;21:209-17.
 [20] Liebermann A et al, Dent. 2019;44:386-95.

Optimally suitable for IPS e.max materials

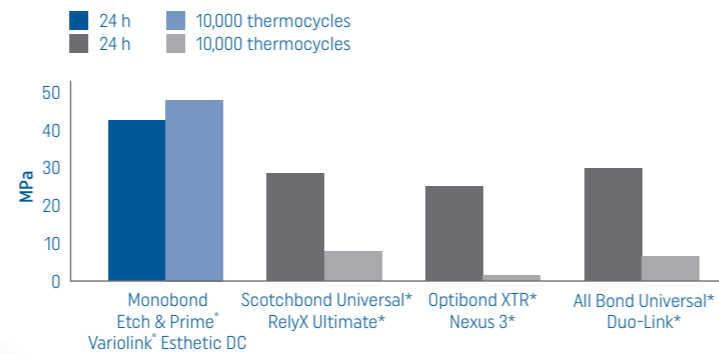
Coordinated with
**IPS e.max
CAD/Press** [21-24]

Coordinated solution for glass-ceramic restorations

Variolink Esthetic produces high bond strength values on restorations made of glass-ceramic, e.g. IPS e.max CAD [21,25], IPS e.max Press [22-24] and IPS Empress CAD, when used in combination with Monobond Etch & Prime, the world's first self-etching glass-ceramic primer. The single-component ceramic primer etches and silanates glass-ceramic surfaces in one easy step. Etching the contact surfaces with the unpopular hydrofluoric acid is no longer required.



Tensile strength on the lithium-disilicate glass-ceramic IPS e.max® CAD at baseline and after ageing [26]



These brands are not registered trademarks of Ivoclar Vivadent AG. [26] Völkel T et al. Monobond Etch & Prime Scientific Documentation, Ivoclar Vivadent, 2015.

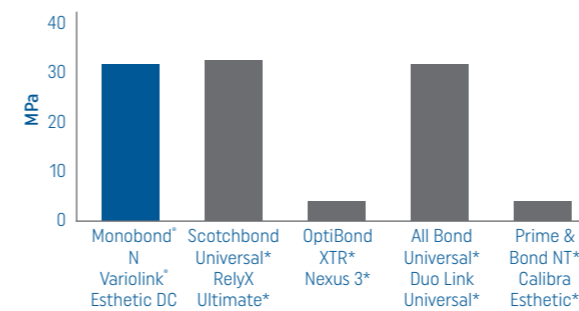
Reliable on
**IPS e.max
ZirCAD** [23, 27]

Reliable bond to zirconium oxide restorations [23, 27]

Variolink Esthetic DC produces a strong bond to restorations made of zirconium oxide and glass-ceramic when used in conjunction with the clinically proven Monobond Plus. Because of a specially patented combination of adhesive monomers, this primer also achieves a long-lasting bond to base metal and noble metal alloys.

Durability of the bond established to zirconium oxide by different primer/bonding systems [28]

Tensile bond strength values after 150 days of immersion in water and 37,500 thermocycles



* These brands are not registered trademarks of Ivoclar Vivadent AG. [28] Elsayed et al., J. Adhes. Dent. 2017; 19: 221-228



[21] Lyann S K et al., J. Adhes. Dent., 2018 (20), p. 261-268.

[22] Guimaraes H A B et al., Int J Biomater, 2018, p. 1-7.

[23] Maassen, et al., J. Prosthet. Dent., 2021, p. 182-188.

[24] Salem S K et al., EDJ, 2019, 65, p. 1853-1864.

[25] The Dental Advisor, Variolink Esthetic DC, LC 18-months clinical performance, Vol. 35, No. 04, p.10-11, 2018.

[27] Elsayed A et al., IADR Abstract #2657, 2017, additional data on file.



"Variolink Esthetic enables me to stay true to one system from one manufacturer, from A to Z. It is a real pleasure to place IPS e.max restorations with the creamy consistency of Variolink Esthetic. Excess material is easy to remove."

Dr Torsten Seidenstricker, Switzerland



"Shade selection and stability, easy excess removal, good radiopacity and excellent handling are characteristics I look for in a high-quality ceramic resin cement. The versatility of having both a dual-cure and a light-cure option makes Variolink Esthetic a winner for me!"

Dr Edward Lowe, Canada

Fixed prosthetics workflow for individual and reliable restorations



Isolate

Relaxed and efficient treatments with OptraGate 2



Select

IPS e.max: all-ceramic materials for nearly all types of restorations



Plan

Select the suitable cementation protocol using the Cementation Navigation System



Condition

Simply condition the bonding surface of a restoration with Monobond Plus



Bond

Generate a strong bond to the tooth structure together with Adhese 2



Cement

Reliable and versatile adhesive cementation with Variolink Esthetic



Protect

Protect restorations with the unique combination of active ingredients contained in VivaDent Protecting Gel